



PINNACLE STAIRLIFTS

CONQUER YOUR STAIRS



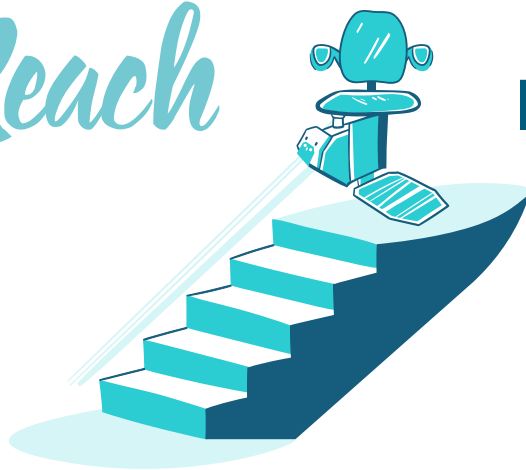
BE INDEPENDENT. BE CONFIDENT. BE INFORMED.

About 36 million older adults fall each year, resulting in more than 32,000 deaths.

The direct medical costs of fall-related injuries total more than \$50 billion annually.

Falls are the second leading cause of injury-related deaths worldwide.

Reach



new heights
AT HOME

It's a common misconception that using the stairs is a great source of exercise. Yes, it's true for some, but when it becomes a struggle to use the steps, they can do far more harm than good. Up to 1 billion people in the world suffer from neurological disorders – that's 1 in 6 people worldwide - and more than 1 million knee and hip replacements combined are performed in the U.S. annually. No matter the cause of difficulty when using the stairs, you are not alone. Stop the stress, take back your independence, and enjoy your home again with the help of a stairlift.

WHY HARMAR'S PINNACLE STAIRLIFTS?

While there are so many other stairlifts to consider, Harmar's Pinnacle Straight Stairlifts are excellent choices for inside the home. Why?



Takes up Less Space

Everyone can use the stairs – stairlifts mount closely to your wall to allow ample room for others to use the staircase. Harmar's flagship model the Pinnacle SL600 boasts a 10.5" minimum folding width, currently leading the industry.

Smooth and Stable Rides

This means no bumps, jolts, or irritating beeps. Harmar's straight and curved stairlifts are designed to provide you with a smooth, quiet ride up and down your stairs. Pinnacle stairlifts are terrific indoor-use-only options for safe and convenient travel from floor to floor!

Minimize Landing Obstructions

Harmar's optional Automatic, yet mechanical, Folding Rail lifts and lowers as the chair leaves or approaches the bottom landing – leaving the lower landing free of obstructions for doors or walkways. At the upper landing, Pinnacle stairlifts can be set up with a Zero-Overrun to keep the rail from intruding into the walkway or door.

Optional Powered Footrest and Powered Seat Swivel Available

Our SL600 and SL300 Pinnacle models are now compatible with not only the automatic folding rail, but also the powered footrest and powered seat swivel. The powered footrest eliminates the need to bend down to raise and lower it, while the automatic power seat swivel helps decrease the amount of movements made by the user.

Low Maintenance

No lubrication or grease needed for gear rack operation! Harmar's stairlifts operate with a patented low-friction nylon polymer worm gear, eliminating maintenance calls and no stains on your floors, carpets, or walls.

PERKS AS A PINNACLE OWNER

1. No Maintenance, No Mess
2. Compact but Mighty
3. Up to 60 Trips During a Power Outage
4. Powered Seat Swivel and Powered Footrest Available

With weight-bearing capacities ranging from 300 lb to 600 lb, Pinnacle Straight Stairlifts are designed to give you the lift you need to enjoy your home. In the event of a power outage, these units can run up to 60 cycles so you can continue to confidently travel from floor to floor.



“My mother has mobility issues, especially with going up and down the stairs, but she really loves the stairlift that Harmar put in for us... I couldn’t be happier with it. Before having the Harmar stairlift put in, I used to walk down the stairs in front of my mother in case she fell, then behind my mother going back up the stairs. Now with the stairlift, we don’t have that issue.”

Other Pinnacle perks include standard features such as:



Safety Obstruction Sensors



Powered or Manual Swivel Seats for Safer Exits



Wide Footrest*



Seatbelt**

**Wider footrests vary slightly in style per Pinnacle model. See model details for more information.*

***Seatbelts are standard on each Pinnacle; SSL-SL600 includes a standard retractable seatbelt.*

FULLY POWERED OPTIONS

Harmar's SL300 and SL600 Pinnacle Straight Stairlifts can be paired with the optional automatic folding rail, powered seat swivel, and the powered footrest for ultimate convenience and ease of use. Why consider these key features?



Automatic Folding Rail

- Automatic deployment while stairlift remains in motion with no extra buttons to press
- Charging strips above and below the hinge provide flexibility for charging location
- Adjustable rubber feet to protect floors
- Mechanical, no extra motors or electronics for enhanced reliability



Power Seat Swivel

- Continuation of ride to the top with no extra control effort
- Five seconds to swivel – faster and quieter than others on the market
- Uses the same up/down control on the armrest

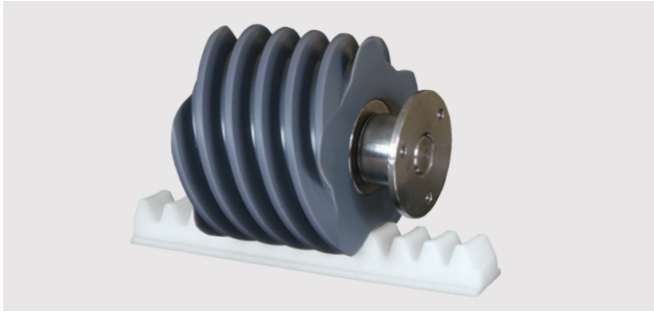


Power Footrest

- Control located on the underside of the armrest
- Two seconds to raise or lower
- Can be activated while seated for easier dismount

A PINNACLE PEACE OF MIND

Your home should be your safe space – a place of peace, silence, and comfort – you don't have to worry about sacrificing any of that when choosing a Harmar stairlift. How do we ensure you have a continuous, quiet, and smooth trip up and down your stairs?



Low friction polymer worm gear with six points of contact result in an energy-efficient and smooth ride.



Nylon polymer gear rack with aluminum reinforcement means your lift doesn't need any lubricant to run. So, you can keep going with less maintenance and no stains!

Calling all **PINNACLES!**

All Harmar Pinnacle Straight Stairlifts come with two call/send remote controls so you can operate your chair without needing to sit on it – this is a fantastic, convenient feature, especially for households with two stairlift users.





"I needed a lift to get up and down from my bedroom. I figured if I was going to get a stairlift, I should get the best available. I'm glad I did! I love the larger seat back and padded armrests. Not to mention, the automatic swivel at the top of the stairs really makes the use so much easier."



The SL600 is complete with an adjustable seat height, padded armrests, retractable seat belt, a status indicator LED light in the armrest, and limited lifetime warranty. But don't forget the additional options to make it your own: key lock, automatic folding rail, power folding footrest, power seat swivel, and additional track over 16'.

MEET THE PINNACLE FAMILY

Pinnacle SL600 Flagship Model!

The SL600 is designed to help you take back your freedom at home with comfort and ease. With a lifting capacity of up to 350 lb, our flagship stairlift provides riders with the confidence to travel up and down their stairs. Boasting the narrowest folded width in the industry of 10.5", guests and other household members have plenty of room to use the stairs.

Lifting Capacity: 350 lb

Seat Backrest: 17.5" x 17"

Seat Bottom: 19" x 16"

Folded Width: 10 ½" from wall
13.6" with folding rail

Track Length: 15' 6" to 70'



MEET THE PINNACLE FAMILY

Pinnacle SL300

If a simpler stairlift solution sounds more like it, consider the SL300. This model is designed to get you where you need to be without all the bells and whistles included with the SL600.

Want to modify it to make it yours?

The SL300 is compatible with the following upgrades and options: retractable seat belt, automatic folding rail, power seat swivel, power folding footrest, chassis obstruction sensor, key lock, extra rail and brackets, and

Lifting Capacity: 300 lb

Seat Backrest: 16.5" x 9.5"

(Adjustable 1" up or down with power feature upgrade)

Seat Bottom: 19" x 16"

Folded Width: 11" from wall, 13.6" with folding rail

Track Length: 15' 6" to 36'



"I'm a simple person, so I figured get a simple lift. It does what I need it to do and I couldn't love it more. I can help my wife with laundry now. So, she loves it, too."



"I was always hesitant to get a stairlift because I thought they are for old people. Now that I have the SL300, my legs feel better and I feel a bit younger again."



"I was so worried I wouldn't find a lift that could accommodate my mom's weight. Until we found a dealer who knew about this HD seat, I thought she was sunk, sleeping in her living room. Now, she can get up and down from her bedroom and I don't have to worry about her messing up her back sleeping on the couch."

MEET THE PINNACLE FAMILY

Pinnacle SL600HD

A little extra support can go a long way. Harmar offers the SL600HD, the highest weight-bearing capacity in the industry. Capable of transporting up to 600 lb, the heavy-duty lift is designed with a high-backed and padded seat to ensure a comfortable ride.

To accompany the plush seat, the SL600HD was manufactured to offer extra support with stationary armrests, an extra-wide seat, and reinforced seat support.

Lifting Capacity: 600 lb

Seat Backrest: 17.6" x 17"

Seat Bottom: 18.5" x 14"

Folded Width: 16.5" from wall

Track Length: 15' 6" to 40'





Based in Sarasota, FL, Harmar is a leading manufacturer of stairlifts, vertical platform lifts, and wheelchair and scooter lifts for automobiles. Inspired by those with limited physical mobility, we are driven to create mobility and accessibility products that allow people to go where they want, when they want, and how they want.

Founded in 1998, we continue our mission of innovation to increase independence and improve the quality of life for millions of people who are mobility-challenged. We constantly strive to evolve and update our product lines to accommodate our growing clientele.

Do you struggle going down your stairs, or feel like you're staring up at a mountain to climb to get to bed at night? A stairlift may be the best answer for you. They are used to help transport the rider from one floor to the next while seated, eliminating stressful stair climbing.

Harmar offers a variety of stairlift solutions to perfectly fit your house and needs. From straight rails to curved, inside to outside applications, Harmar is sure to have a stairlift to best fit your lifestyle to help you enjoy the comfort of your home.



THE HARMAR DIFFERENCE

We believe in supporting you on your journey. Our products are proudly designed and assembled here in the U.S. to help you and your loved ones enjoy freedom, independence, and dignity.



First-rate Customer Service and Support

We stand behind our products to ensure your safety and happiness with your lift. Harmar offers the best support in the industry with our LiftSquad service network, training, and support. Our 3-year transferable warranty (or limited lifetime warranty with the SL600) provides flexibility.

Safety & Testing

All of Harmar's products are subject to intense testing by subjecting the product to several times its rated load, plus life-cycle testing at or above industry standards. We take pride in knowing that our products exceed quality expectations and are more than ready to lift your life in multiple ways.

Comprehensive Dealer & Service Network

Harmar has thousands of dealer locations across North America, which helps make our products available when and where you need them. To ensure you're choosing the best lift possible for your needs, our dealers provide assessment services, installation, and routine maintenance and service. Most of our dealers are LiftSquad-certified, meaning they are factory-trained on our products, undergo routine background checks, promise to train you and caregivers on the installed product, and provide the utmost respect to you and your property. They go above and beyond to give you the best service possible.

PINNACLE STAIRLIFT SPECIFICATIONS

	SSL-SL600	SSL-SL600-HD	SSL-SL300
Weight Capacity	- 350 lb	- 600 lb	- 300 lb
Drive System	- Patented nylon polymer gear rack - Helical worm gear	- Patented nylon polymer gear rack Helical worm gear	- Patented nylon polymer gear rack Helical worm gear
Speed	- 20 FPM	- 14 FPM	- 20 FPM
Seat Backrest	- 17.5" x 17"	- 17.6" x 17"	- 16.5" x 9.5" (<i>Adjustable 1" up or down with power feature upgrade</i>)
Seat Bottom	- 19" x 16"	- 18.5" x 14"	- 19" x 16"
Folded Width	- 10 ½" from wall - 13.6" with folding rail	- 16.5" from wall	- 11" from wall 13.6" with folding rail
Track Length	- 15' 6" to 70'	- 15' 6" to 40'	- 15' 6" to 36'
Power	- 24V DC	- 24V DC	- 24V DC
Incline Limits	- 27° to 52°* <i>* inclines above 45° may require local jurisdiction approval.</i>	- 27° to 48°* <i>* inclines above 45° may require local jurisdiction approval.</i>	- 27° to 52°* <i>* inclines above 45° may require local jurisdiction approval.</i>
Seat Swivel	- 35° & 85° at top	- 85° at top and bottom landing	- 35° & 85° at top
Footrest to Seat Height	- 16.5" to 24" adjustable	- 16.5"	- 16.5"
Certified	- ETL listed - CSA B44.1/ASME A17.5-2019 - Safety standard ASME A18.1-2020 - Rated commercial and residential	- ETL listed - CSA B44.1/ASME A17.5-2019 - Safety standard ASME A18.1-2020 - Rated commercial and residential	- ETL listed - CSA B44.1/ASME A17.5-2019 - Safety standard ASME A18.1-2020 - Rated residential

OPTIONS

	SSL-SL600	SSL-SL600-HD	SSL-SL300
Folding Rail	- Yes	—	- Yes – upgrade to chassis obstruction sensors
Power Swivel	- Yes	—	- Yes
Power Footrest	- Yes	—	- Yes – upgrade to adjustable footrest height

ACCESS 1 ELEVATOR
787-359-8258



1500 Independence Blvd., Suite 220
Sarasota, FL 34234
800-833-0478
Harmar.com

*Images used for this brochure are for illustrative purposes only, please refer to local code for specific configuration requirements.